


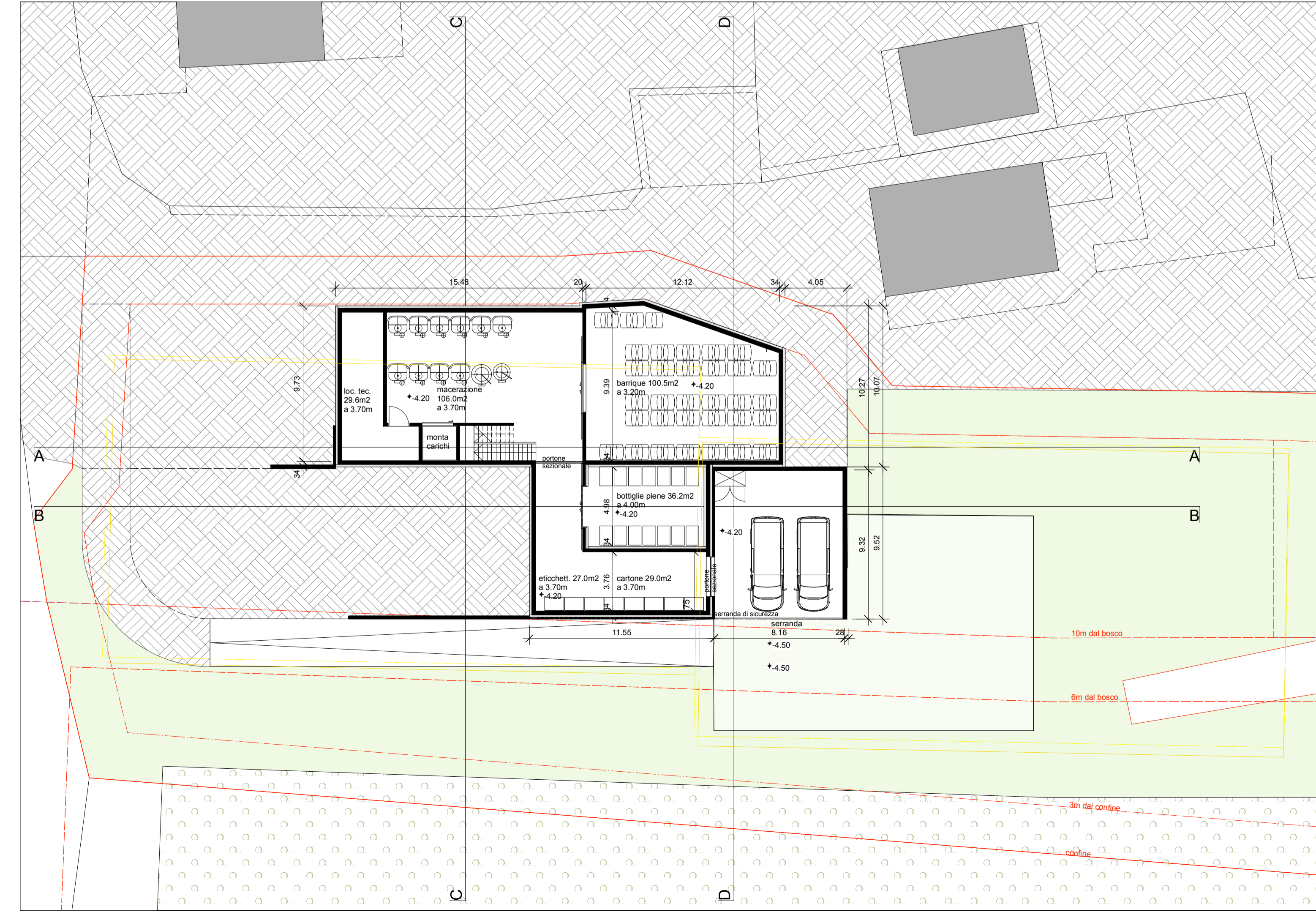
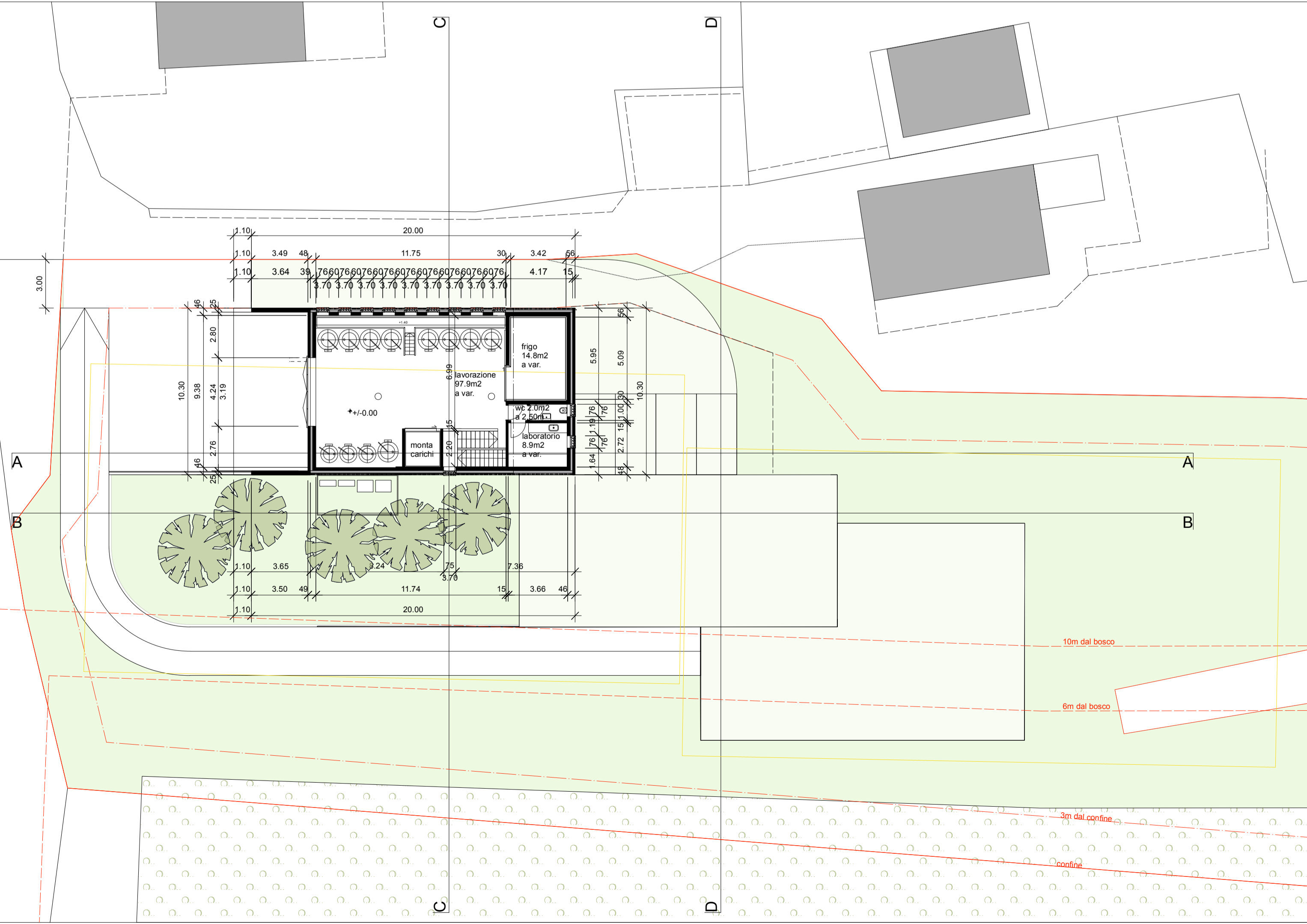
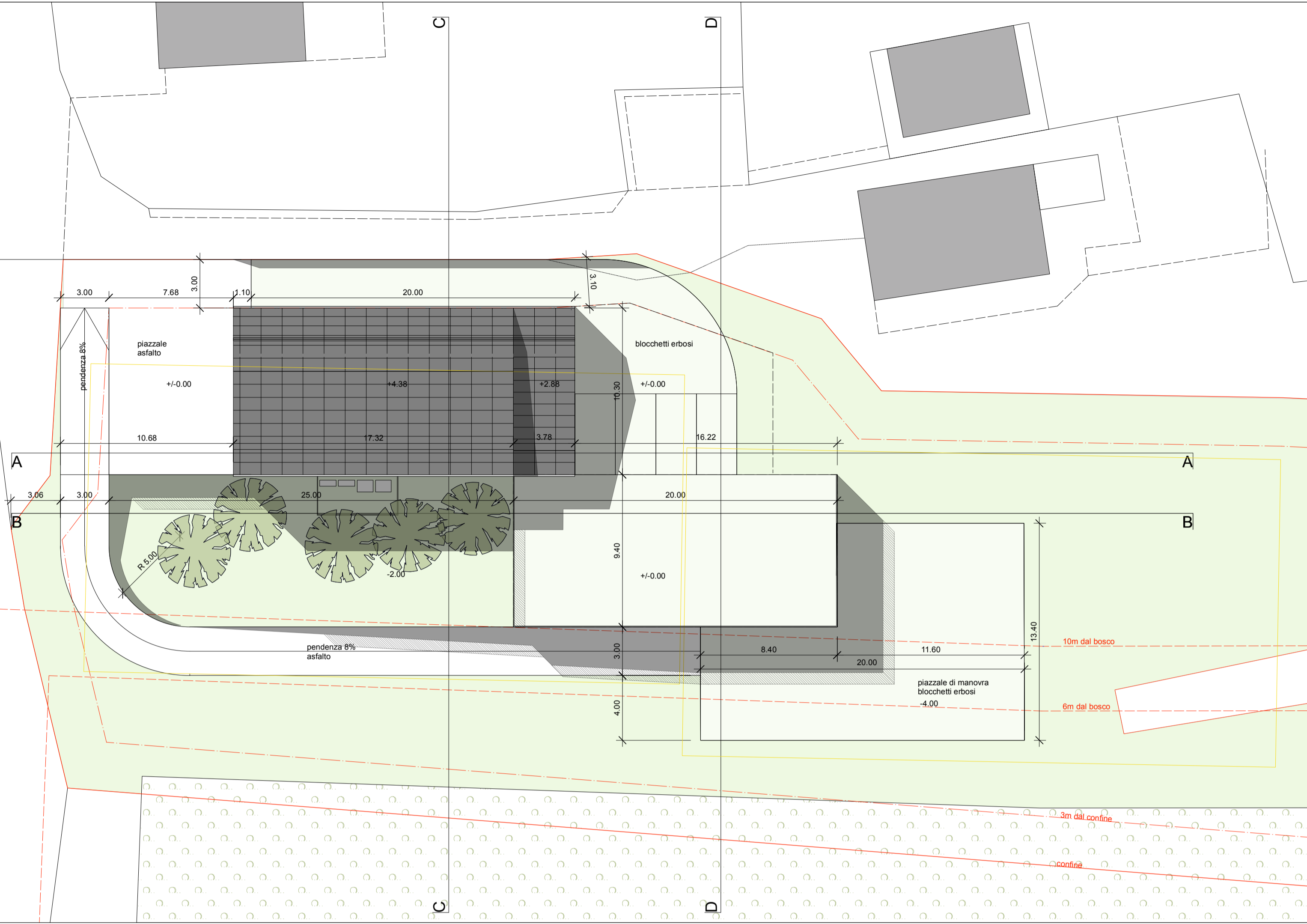
Avvertenza:  
 Questo documento assume carattere ufficiale solo con la firma autografa del geometra revisore competente.  
 Elaborato sul portale [www.tigeo.ch](http://www.tigeo.ch) il 02.07.2020

Ing. BOTTANI Antonio  
 Via Generale Guisan 16  
 6932 Breganzona  
 ++41(0)91 9601750  
 info@bfingegneria.ch

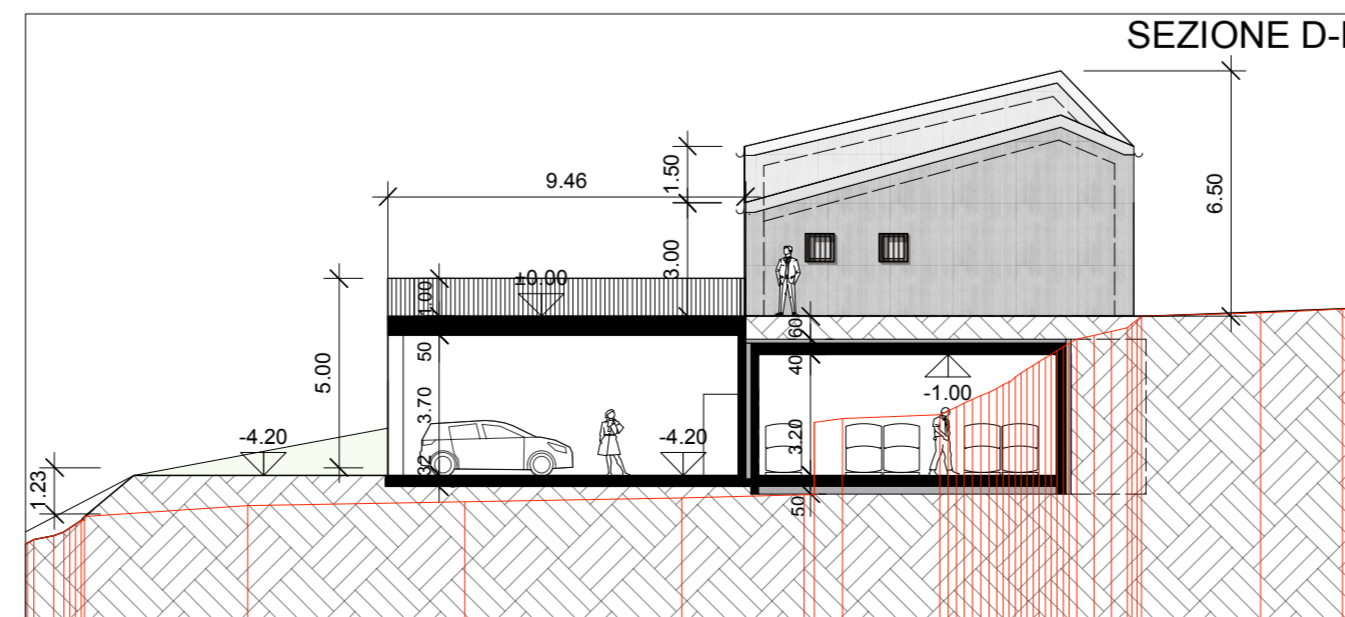
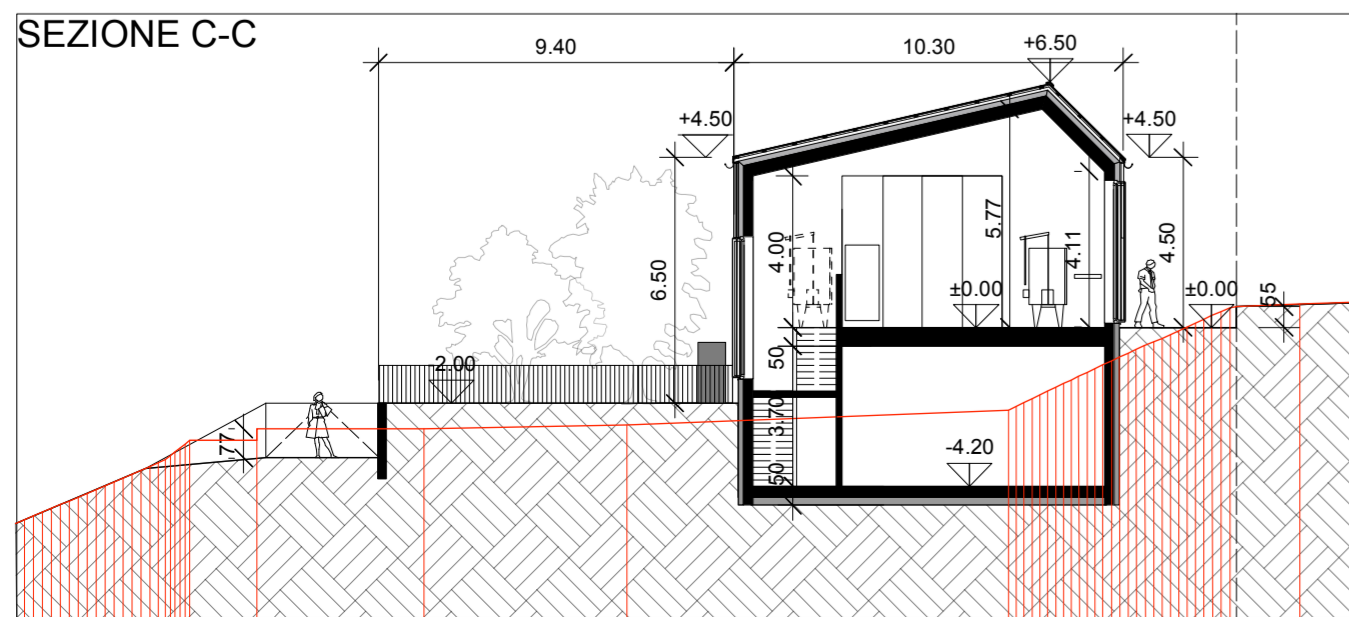
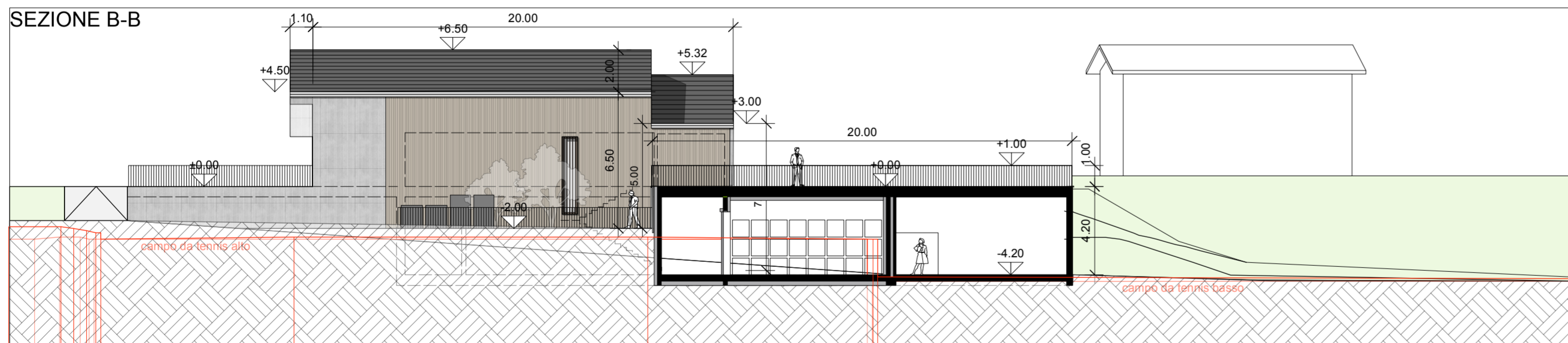
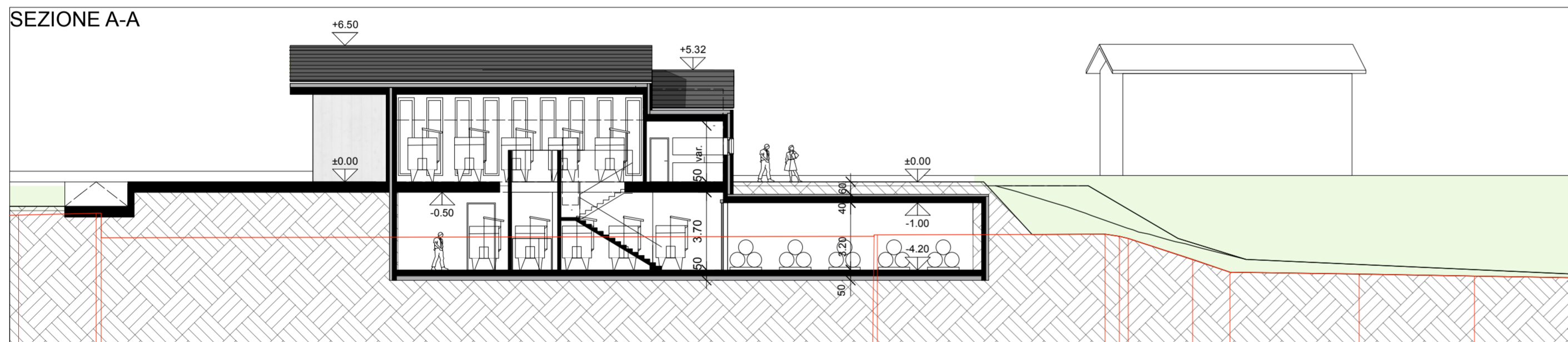
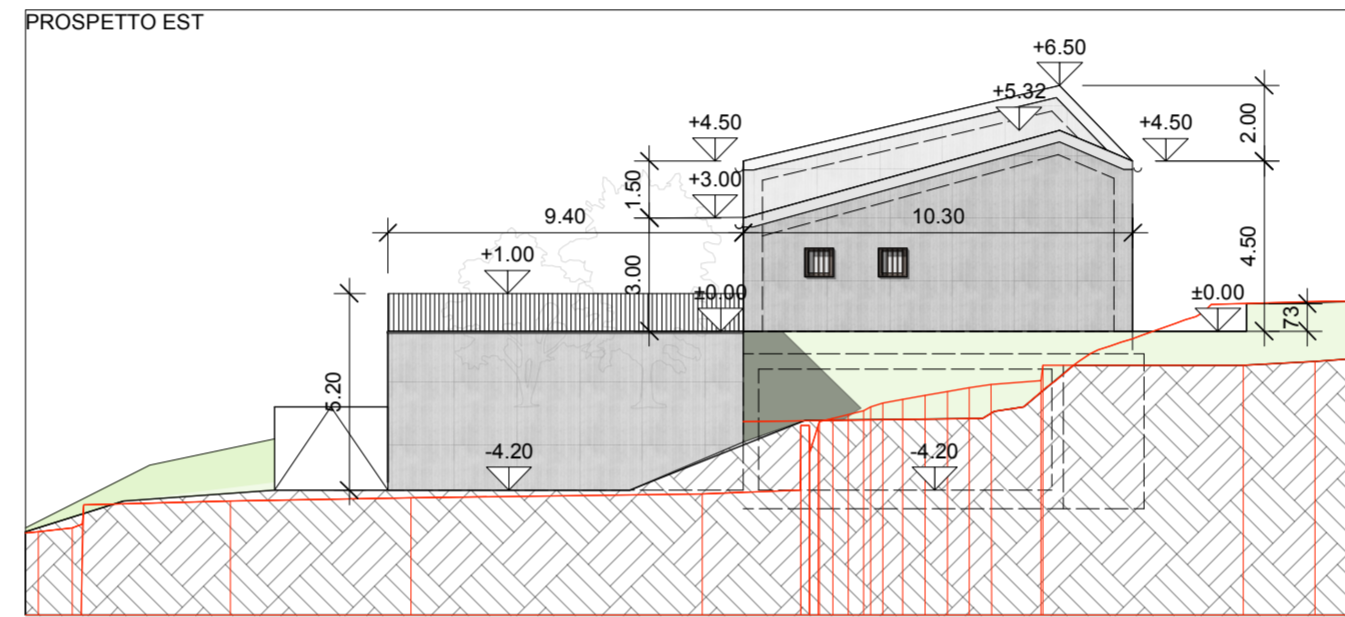
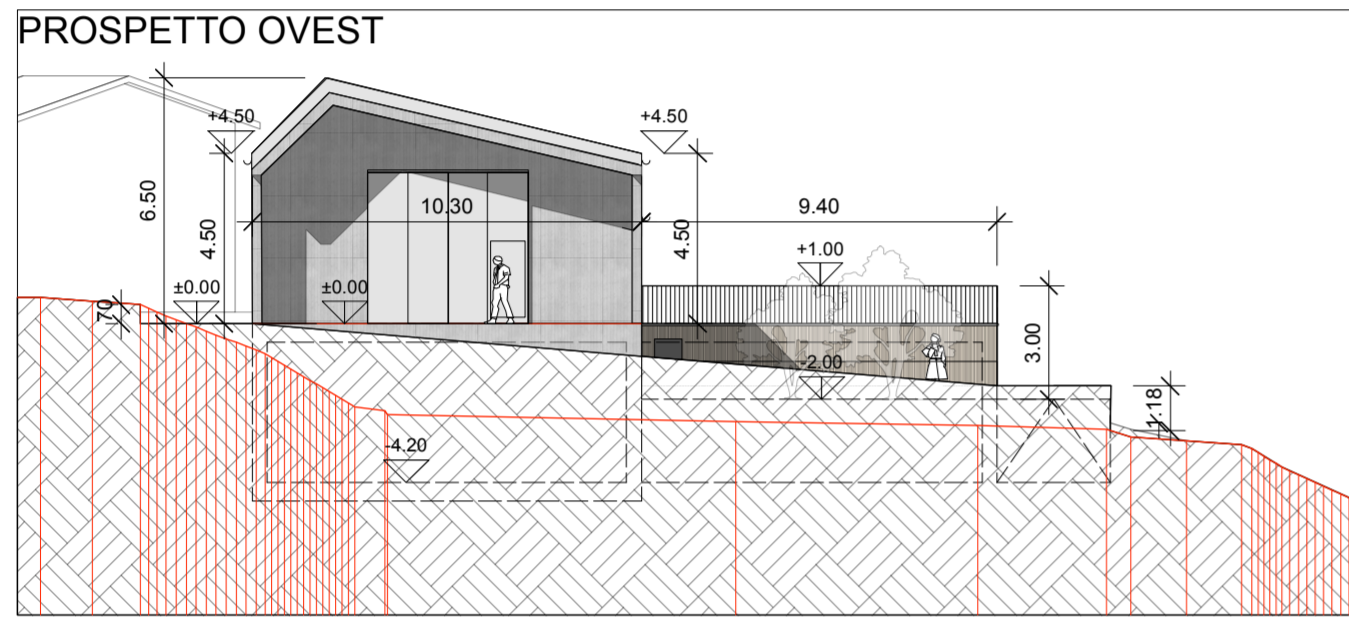
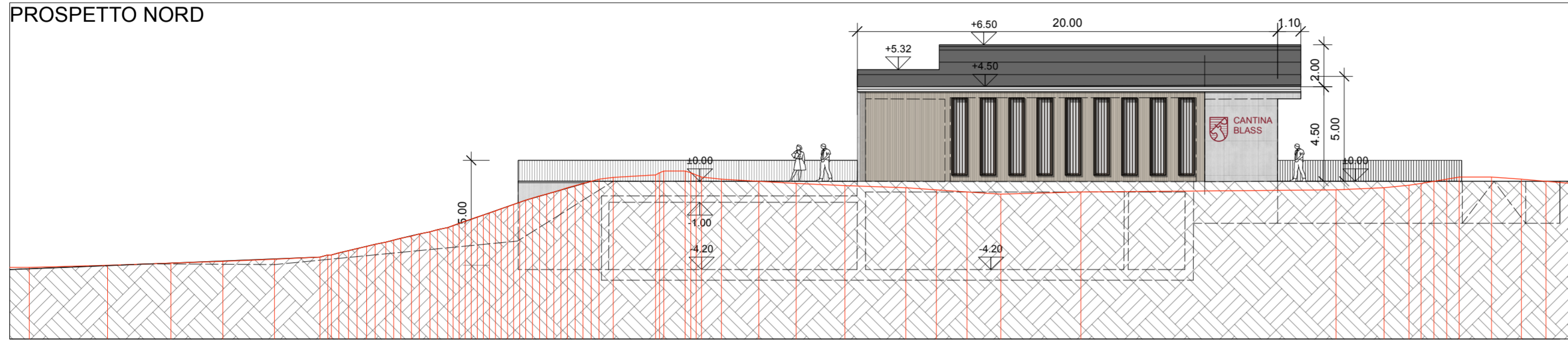
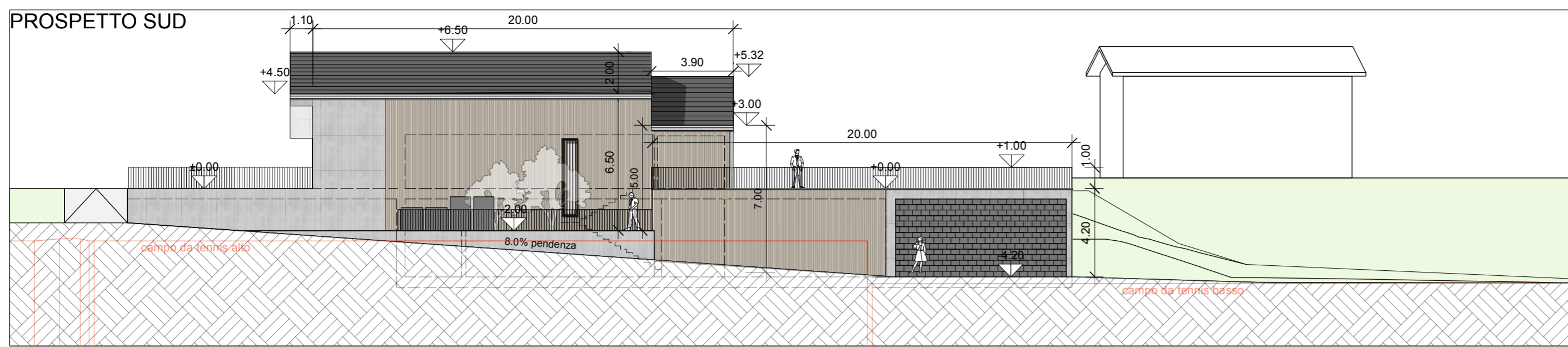




<b>DOMANDA DI COSTRUZIONE</b>			
ASTANO	CANTINA BLASS	MAPP. 636	
PIANTE	1:200	10.10.2022	
+/- 0.00 = 629.70 m.s.l.m	0	10	20
<small>STRÄULI-GAGGINI ARCHITETTI SA Isa Sträuli-Gaggini Arch. ETH/SIA/OTIA Via Fornasette 58 6998 Monteggio  isa@archisaticino.ch Tel +41 79 263 04 51 www.archisaticino.ch</small>			
<b>PROPRIETARIO</b>			
Dr. Max Brentano Paradiesstrasse 16 5200 Brugg			
<b>ISTANTE</b>			
Cantina Blass SA Via Eugenio Schmidhauser 4 6999 Astano			
<b>ARCHITETTO</b>			
Sträuli-Gaggini Architetti SA Via Fornasette 58 6998 Monteggio			







DOMANDA DI COSTRUZIONE			
ASTANO	CANTINA BLASS	MAPP. 636	
PROSPETTI E SEZIONI		1:200	310.10.2022
+/- 0.00 = 629.70 m.s.l.m	0	10	20
STRÄULI-GAGGINI ARCHITETTI SA		Isa Sträuli-Gaggini	Arch. ETH/SIA/OTIA
		Via Fornasette 58	6998 Monteggio
		isa@archisatcino.ch	Tel +41 79 263 04 51
		www.archisatcino.ch	
<b>PROPRIETARIO</b>			
Dr. Max Brentano Paradiesstrasse 16 5200 Brugg			
<b>ISTANTE</b>			
Cantina Blass SA Via Eugenio Schmidhauser 4 6999 Astano			
<b>ARCHITETTO</b>			
Sträuli-Gaggini Architetti SA Via Fornasette 58 6998 Monteggio			